



**TFG Transfracht – Your specialist for
seaport hinterland transports.**

Over 50 years of success. »

- 1969:** Transfracht Deutsche Transportgesellschaft mbH is founded as a wholly owned subsidiary of Deutsche Bahn, coinciding with the inception of the combined freight transport industry. The company's mandate is to develop the German container transport market and provide services on it. (Transporting German containers)
- 1970:** Transported approximately 6,000 TEU.
- 1971:** Ocean container transport is shifted to TFG, which opens sales offices to establish an on-site presence in the German cities of Hamburg, Düsseldorf, Frankfurt and Stuttgart. TFG transports more than 100,000 TEU.
- 1972:** Delivery of 300 folding side-wall containers. This new container type from TFG and Deutsche Bahn significantly improves the competitiveness of German container transport.
- 1976:** TFG's share of the rail container transport market to and from Germany's seaports grows to some 75%.
- 1977:** TFG increases the range of services it offers to include idle container services (handling, repair, storage and signaling system) in cooperation with Buss, a company based in Hamburg. TFG begins offering services in the German city of Frankfurt am Main and expands service centers throughout the country.
- 1980:** DB's large containers are approved for use in international rail transport, making TFG and Deutsche Bahn pioneers of the domestic European container transport market.
- 1985:** The number of containers transported by TFG exceeds half a million for the first time.
- 1987:** TFG introduces computer-aided container disposition.
- 1990:** Combined transport in former East Germany is integrated. The former East German rail terminals are connected to the existing CT network. Deutsche Reichsbahn, the rail company of former East Germany, becomes a shareholder.
- 1991:** TFG transports approximately 7.5 million tons.
- 1996:** TFG reorients to focus solely on seaport hinterland transport and international transport. At this time, TFG has 8,000 of its own containers for German and European transport.
- 1998:** AlbatrosExpress is founded – today, it is the densest seaport hinterland rail network to and from Germany's seaports.
- 1999:** Austria is added to the TFG network and later rebranded AlbatrosExpress Austria.
- 2000:** The rail freight transport market is liberalized – the first competitors launch their businesses.
- 2002:** Turntable introduced through the German city of Maschen.
- 2003:** TFG enters into e-commerce: First container is booked online on "E-Services," TFG's booking platform.
- 2005:** TFG is the first operator to offer online tracking and tracing. 50% HHLA.
- 2006:** Switzerland is added to the TFG network and later rebranded AlbatrosExpress Switzerland.
- 2009:** The market leader in seaport hinterland transport celebrates its 40th anniversary! TFG opens a branch office in Austria.
- 2012:** 100% Deutsche Bahn.
- 2013:** The Czech Republic is added to the TFG network – AlbatrosExpress Czech Republic.
- 2015:** The network links over 15,000 cities and 25 terminals in Germany, Austria, Switzerland and the Czech Republic. Transported volume is 900,000 TEU and there are more than 13,500 rail connections with 270 trains running per week. More than 80 depots are linked to the network.
- 2017:** box2rail is launched. Wilhelmshaven is the third port to be linked to the German seaports. ISO certifications is received for the first time (DIN ISO 9001:2015 and 14001:2015).
- 2019:** Company name under: TFG Transfracht GmbH. TFG celebrates its 50th anniversary! Direct connections to the southern port of Koper and the western port of Rotterdam. Transport of 1,000,000 TEU mark (1,000.352) cracked. Connection of the Duisburg and Ludwigshafen terminals.
- 2020:** New connections: Terminal Graz, terminal Bremen Roland, terminal Wolfurt, Port of Antwerp, Port of Stuttgart. Start of AlbatrosExpress West with daily connections from/to Rotterdam & Antwerp. Start of the Sustainability Initiative TFGreen.
- 2021:** Connection of bayernhafen Passau and Italy (Verona & Milan).
- 2022:** Connection of Osnabrück and Billwerder (Port of Hamburg)
- 2023:** Connection of Denmark
- 2024:** Connection of Duisburg
- 2025:** Implementation of a digital Driver-App – enabling paperless, transparent an efficient transport processes

Maritime Supply Chains need intermodal logistics. »

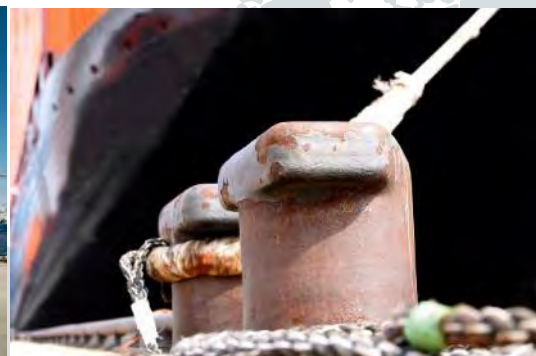
Global production and intercontinental trade require more

sea freight



modal shift

Energy efficiency and preservation of resources are becoming more important in the world of logistics.



Combined transport

is a driver for growth in European rail freight and will grow even further in the following years.

By 2030, CT's share of the market will jump to

35%



It depends on seaport hinterland transports. TFG Transfracht – your partner for intermodal logistics. »



Specialist for seaport hinterland transports. »

On a daily basis, market leader TFG Transfracht connects the several container terminals of the German seaports, Koper, Rotterdam and Antwerp with its comprehensive **AlbatrosExpress Network** to more than **15,000 destinations** in Germany, Austria, Switzerland and Italy. Each year we transport around **1.000,000 TEU** and allocate around **15,000 connections** to rail traffic. As a specialist for seaport hinterland transports, we offer the ideal **combination** of **rail** and **road**.



+ TFG Transfracht GmbH

Turnover	295 million euros
Employees	245

Directors:

Frank Erschkat (speaker), Thomas Hesse, Sören Kaminsky



Offices:

Headquarters in Mainz with regional offices in Hamburg, Bremerhaven, Berlin, Leipzig, Duisburg, Mannheim, Nuremberg, Kornwestheim, Munich, Enns

Financial year 2025

+ Business segment

Container transports in seaport hinterland traffic	
4 countries	Germany, Austria, Switzerland, Italy
6 ports	Hamburg, Bremerhaven, Wilhelmshaven, Koper, Rotterdam, Antwerp
1 system	AlbatrosExpress

+ Figures

Foundation	14.04.1969
Transported volume	around 1 Mio. TEU/year
Connections	15.000/year
Trains	260/week

+ TFG Transfracht is a Deutsche Bahn AG company

Combined traffic with system: one network for four countries »

No matter whether your containers need to be transported to Germany, Austria, Switzerland, Italy or other neighbouring countries: our range of logistic services for the German seaports and Koper will bring your goods to their destination quickly and safely.

In nature, the albatross is a prime example of performance, endurance and an enormous range. That's why the name **AlbatrosExpress** is representative for the range of logistic services offered by TFG Transfracht.



A night-time photograph of a rail yard. In the foreground, a gantry crane is positioned over a series of containers. The containers are stacked and labeled with various information, including 'MAX. GROSS 34000 kg', 'www.berbschi.com', 'IBC HULK', '507', 'CONTAINER LEASING', '45', 'PCVU 361022 DE 2475', and 'CAPACITY 26500L 7000 US GALLS'. A train of freight cars is visible in the background, moving through the yard. The scene is illuminated by overhead lights, creating a blue and yellow color palette.

As an operator in combined transports, we are connecting the system-strength of rail with the flexibility of trucks. »

Seaport hinterland logistics with TFG Transfracht. »

260

container trains per week.

600.000

LKW-loads shifting from road to rail.

= - 400.000 to CO₂e

25

Germany
Austria
Switzerland
Italy

> 4.000

Consignors, recipients
(Industry and Trade).

15.000

connections per year.

Ø 600 km

Average distance of a container on a long distance train route.

hinterland terminals.

> 90

Container depots are connected to the AlbatrosExpress.



> 500
customer

A large proportion of orders is placed electronically (EDI interface, web).

CO₂- emissions compared to road transport

- 80%

Ø 27 km

Average distance per truck for the 'last mile'.



Around 25.000 transports of dangerous goods per year.

> 1.000 deliveries per day.

www.transfracht.com +++ prices +++ time tables +++ bookings +++ tracking & tracing +++ Online-transport contracts +++ last minute and stand by offers +++

Seaport hinterland logistics with TFG Transfracht. »



Extensive network to the northern, southern and western ports with: high frequencies, fixed timetables, short transport times, flexible production.



AlbatrosExpress Switzerland. »

The **AlbatrosExpress Switzerland** links the Swiss terminal Basle-Weil.

Short transport times, a direct link to all container terminals at the northern seaports, departures on Sundays and public holidays and full independence of low and high Rhine River water levels are the main benefits of the TFG train system for the Swiss market.



» 6 x per week
Basel



AlbatrosExpress Austria. »

The **AlbatrosExpress Austria** connects Austria six times a week to the terminals in Salzburg, Vienna, Enns and Wolfurt with the German seaports of Hamburg and Bremerhaven. The direct connection to Koper and to the Western ports offers further options and even more flexibility and faster transit times for transports with TFG.

Our service portfolio for the Austrian market guarantees an optimum network coverage of the economic conurbations in Upper Austria, Lower Austria, Styria, Lower Austria, Vienna, the state of Salzburg and Tyrol region via the terminals in Ulm, Wolfurt (Voralberg), Munich, Salzburg, Enns and Vienna – via German seaports, Southern port of Koper and via Western ports.



German seaports

- » 40 x per week
Vienna /Enns
- » 12 x per week
Salzburg
- » 4 x per week
Wolfurt

Southern ports

- » 8x per week
Enns
- » 8 x per week
Graz

Western ports

- » 4 x per week
Wolfurt



AlbatrosExpress Italy. »

The **AlbatrosExpress Italy** operates the terminal of Verona. The AlbatrosExpress trains run up to ten times a week between the northern Italian industrial belt and the German seaports, as well as between the western ports.

With our AlbatrosExpress Italy by rail, we offer a climate-friendly and reliable alternative for alpine transit.



German seaports & western ports

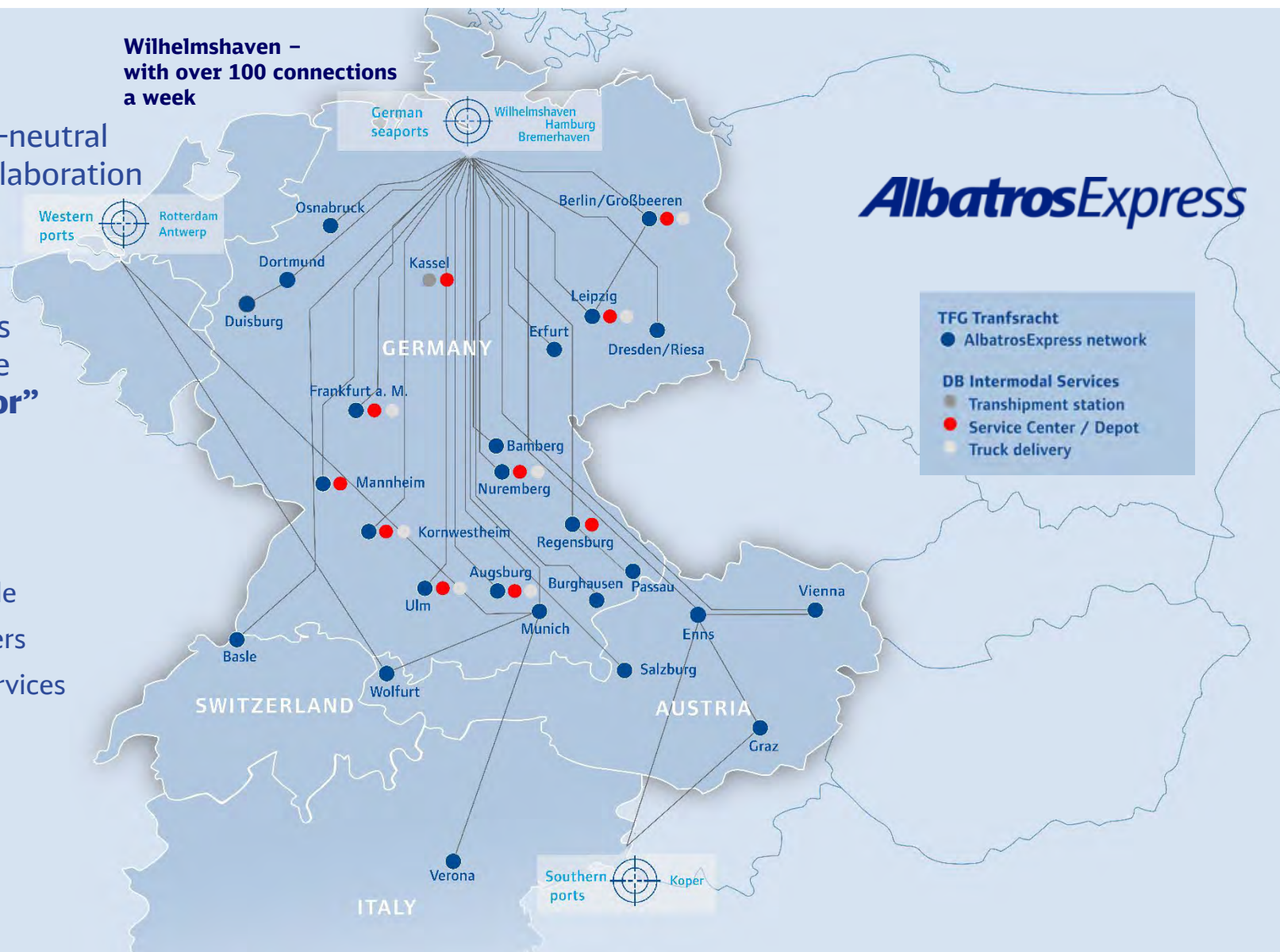
» Up to **10** x per week
Verona



Maritime supply chains require intermodal logistics. Seaport hinterland logistics with TFG Transfracht. »

» Transfracht acts as a port-neutral operator and, in close collaboration with DB Intermodal Services, offers shipowners, freight forwarders and customers in industry and commerce **integrated “port-to-door” solutions:**

- Pre-carriage to and onward carriage from seaport by rail
- Trucking for first and last mile
- Supplying of empty containers
- Depot services and other services



To score in combined transports. Reliability on the „final mile“. »

On average a container moves 600 km in the main run by rail, only 27 km on average on the **final mile** by truck.
About **1,000 truck-deliveries** are made by TFG Transfracht daily.

Annually we shift about **600,000 truck loads** from **road** to **rail**.
Regarding **road pre-carriage** and **road on-carriage** we rely on trucking partners which have the best local competence and reliability.



- + Long standing experience in container-trucking
- + Best possible euro class classification of the vehicles
- + High number of chassis
- + Driver with ADR-licence at all AlbatrosExpress-terminals
- + Extensive road delivery in Germany, Austria, Switzerland and Italy
- + Cooperation with regional partners
- + Protection of job in the regions



Needs based equipment care. »

More than 90 empty depots are associated to the AlbatrosExpress-System. Every empty container undergoes a thorough inspection at the Service Center on arrival and departure.

+ Depot-Services

We offer storage of containers at our terminals.

The services include:

- + Storage
- + Reporting of arrivals and departures
- + Reporting of damages
- + Repair
- + Attaching and removing of hazardous goods labels



Modern order management. »

For example: status reports.



- + Proactivity towards final customers**
- + No need for manual entries**
- + Prompt cost transparency**
- + Avoiding media discontinuity**

Reliable and professional contacts for your daily business and special inquiries. »

Customer Service

» Our customer service team is available 12 hours a day:

MO.-FRI.: 7:00 a.m. – 7:00 p.m.

» Our customer service representatives are your **first point of contact** for all matters concerning transport:

- + Providing information on capacities and tariffs
- + Accepting and processing orders
- + Inspecting contents and processing dangerous goods
- + Providing information on train planning and provisioning
- + Monitoring transports and providing information in case of irregularities
- + Providing support in matters concerning our e-services

Your customer service contact:

» **Claudia Penning**
 Tel.: +49 40 391 855-091
 E-Mail: Claudia.Penning@transfracht.com

Morten Tillack
 Tel.: +49 40 391 855-081
 E-Mail: Morten.Tillack@transfracht.com

Uta Köll
 Tel.: +49 40 391 855-095
 E-Mail: Uta.Koell@transfracht.com

Mike Henkel
 Tel.: +49 40 391 810-086
 E-Mail: Mike.Henkel@transfracht.com

Central Inside Sales

» Our Inside Sales Team is here for you:

MO.-THU.: 8:00 a.m. – 5:30 p.m. & FRI.: to 5:00 p.m.

» Our inside sales representatives will handle your questions about pricing:

- + Price information
- + Special equipment
- + Special prices / tender requests
- + Support for e-services, e.g. registration, price information
- + Support for questions about TFG product
- + Complaints

Your inside sales contact:

» **Mandy Neick**
 Tel.: +49 40 391 855-120
 E-Mail: Mandy.Neick@transfracht.com



Preventive safety for dangerous goods. »

TFG Transfracht ensures that container transports of dangerous goods are carried out safely and smoothly. The company complies with **national** and **international regulations** and laws for the transport of all categories of dangerous goods. At the same time **internal standards** exceed by far the relevant rules.



The TFG Transfracht Dangerous Goods Safety Advisor is the **person to contact** for any questions regarding the safety of dangerous goods. The safety of dangerous goods within the transport chain is also ensured by means of permanent mobile monitoring of all the partner companies in the areas of road, rail and transshipment.

+ High safety standards

- + Internal dangerous goods/waste databank
- + Employee training programmes on dangerous goods
- + All the drivers working for haulage contractors engaged by TFG for the transport of dangerous goods are in possession of ADR certification
- + The TFG Dangerous Goods Safety Advisor is available around the clock

+ Bookings for dangerous goods at www.transfracht.com

+ Dangerous goods specialist

Marvin Kuch
Mobil: +49 (0) 1523 75 39 094
E-Mail: Marvin.Kuch@deutschebahn.com

Holiday replacement:
DB Cargo
Phone: +49 (0) 6131 1518 310

Convenient customs clearance. »

TFG Transfracht offers you the **external Union transit procedure** (T1-NCTS) for the transport of non-Union goods under customs supervision.

The transit procedure for transport by rail requires the ready issued **transit accompanying document** (VBD). In case you do not want to prepare the T1-NCTS yourself, we offer to prepare it through one of our **certified customs service providers**.

The TFG customs specialist is your **personal contact** for all matters relating to the customs clearance of your transports.



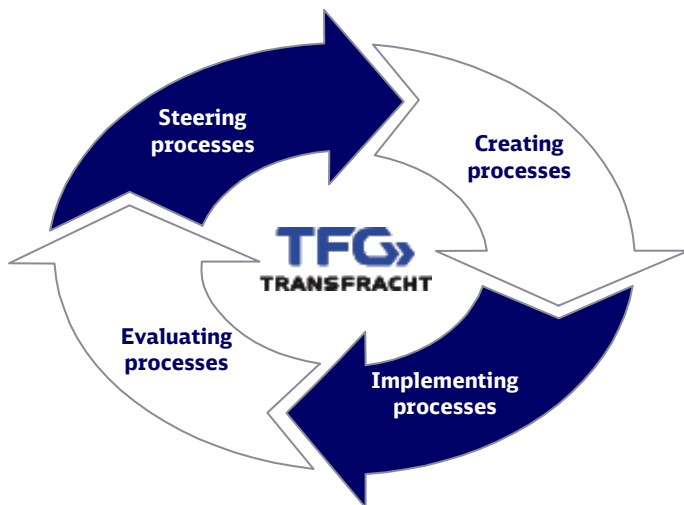
+ Customs specialist

Jan-Michael Salamon
 TFG Transfracht GmbH
 Beim Strohhaus 27
 20097 Hamburg
 Tel.: +49 (0) 40 / 391 855-101
 Mobile: +49 (0) 173 / 65 27 573
 E-Mail: Zoll@transfracht.com

¹ except consignments with the AlbatrosExpress Austria and transports via the Riesa, Passau and Stuttgart transshipment terminal.

Process- und quality management. »

+ Process management cycle



TFG Transfracht connects **process and quality management** closely. Permanent surveys of KPi's enable comprehensive analyses and **optimization** of TFG Transfracht **service and production procedures**.

+ Surveyed quality figures

- + Punctuality of rail production and failure rates
- + Punctuality for on time delivery
- + Reliability
- + Process figures as a base for measures of improvement

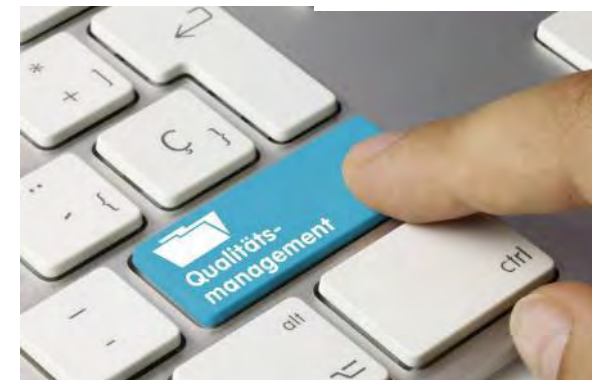


+ Overview of advantages

- + Effective and efficient business procedures
- + Permanent analyses and optimizations of operative procedures according to the control circuit principle
- + Implementation of consistent processes
- + Clear regulation of process responsibility
- + Development of holistic solution approach
- + Use of process guides and regulations
- + Process and procedure trainings for employees

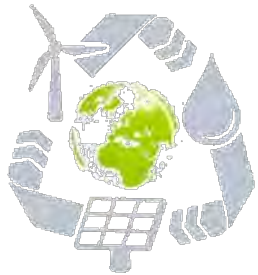
+ Audits and certifications

- + Certified quality and environment management system (DIN ISO 9001 and 14001)
- + Authorised Economic Operator (AEO)
- + Internal audits to secure quality
- + Regular audits for service providers and partners
- + Accompanying of customer audits
- + Adherence to compliance and environmental requirements





Green Logistics. »



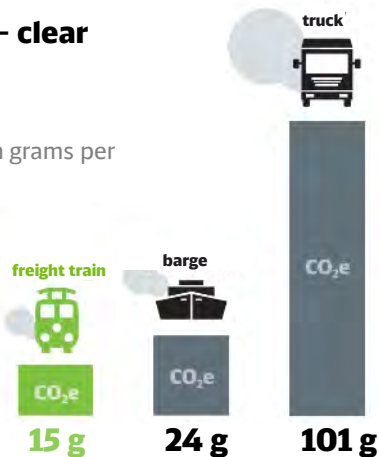
Sustainable economic development has become a component of our life. When it comes to **“green logistics”**, TFG Transfracht, as a logistics service company, is setting a good example and counts on rail connections.

Thereby about **80 % carbon footprint** will be cut against road transport. Thus making a sustainable contribution to environmental protection. With **TFGeco train** and **TFGeco truck**, we are pioneers for climate-friendly combined transport.

Rail freight transport – clear carbon footprint edge

Freight rail:

Greenhouse gas emissions in grams per tonne and kilometre (tkm)



Deutsche Bahn AG | December 2024
 - CO₂e: Sum of the greenhouse gases carbon dioxide, methane and nitrous oxide
 - Sources: UBA (TREMOD 6.42, 2024).

Renewable energy in DB traction current mix

Status 2025
69 %

Deutsche Bahn AG 11/2025



DB Cargo ensures carbon neutrality by using 100% renewable power, hydrotreated vegetable oil (HVO) and / or offsetting, depending on the route and requirements. DB Cargo offsets the indirect and / or remaining emissions through recognized climate protection projects according to VCS + Social Carbon / CCBS or the Gold Standard.

TFGeco train. »

With **TFGeco train** CO₂e-neutral on the rail.

We offer you consistently renewable electricity from renewable energy sources for your transport by rail. This allows us to carry your transports completely CO₂-neutral. Non-avoidable CO₂e-emissions in the case of non-electrified routes or when travelling abroad, CO₂e-neutral by compensation.

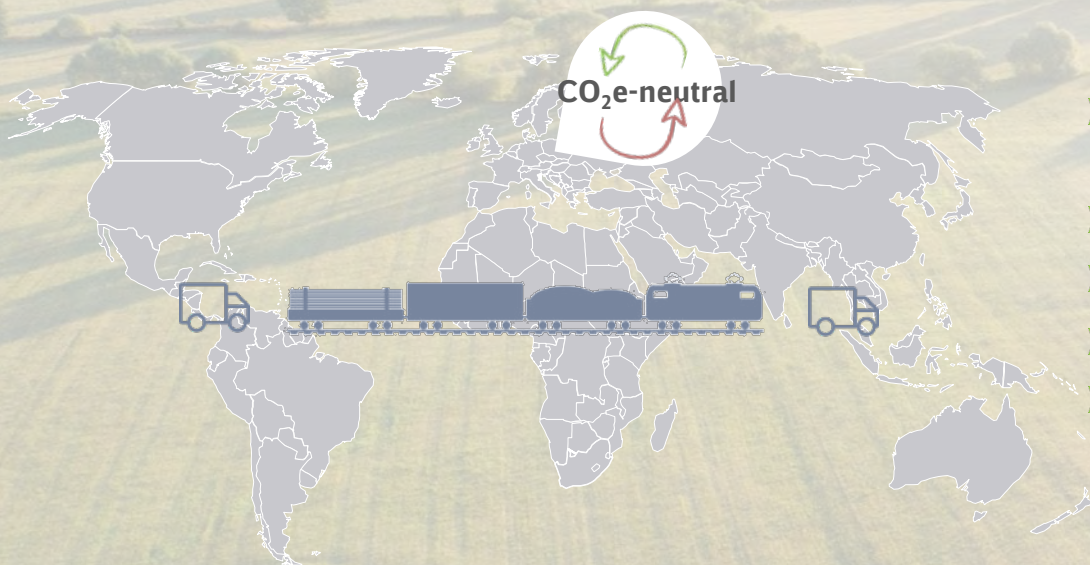
- » 100% CO₂e-neutral by eco-power or 100% CO₂e-neutral by compensation
- » For rail freight on all routes
- » Certificate by TÜV (german routes)
- » Yearly certificate about avoidance



TFGeco truck. »

With **TFGeco truck** compensate for remaining emissions in the pre- and post-carriage

TFGeco truck compensates for unavoidable CO₂e-emissions on the road and is therefore the perfect complement to **TFGeco train**. In addition to offset emissions, you also promote sustainable projects that promote the expansion of renewable energies and reduce CO₂e-emissions. The projects are based on the international agreements under the Kyoto Protocol on Climate Change.



- » Compensation of CO₂e-emissions by purchase of climate certificates
- » Worldwide and also available at non-electrified routes
- » Pre- & On-Carriages at road
- » Supplement to **TFGeco train**
- » Certificate about avoidance

We count on local presence. Your contact at TFG Transfracht. »

» Managing Director Maritime



**Geschäftsführung
(Sprecher)**
Frank Erschkat
Rheinstraße 2
D-55116 Mainz
Tel.: +49 170 6383655

» Head of Regions / Deputies



**Head of Region
East North**
Frank Gedat
Landsberger Straße 257
D-12623 Berlin
Tel.: +49 160 97486999



**Head of Region
South**
Christian Süß
Hofbräuallee 11
D-81829 München
Tel.: +49 171 5677254



**Head of Region
West/Switzerland**
Sebastian Kolb
Im Freihafen 14
D-47138 Duisburg
Tel.: +49 172 6862735



**Head of Region
Austria**
Rebecca Leitner
Donaustraße 3
A-4470 Enns
Tel.: +43 664 9624260

» Head of Commercial



Philipp Best
Beim Strohhouse 27
D-20097 Hamburg
Tel.: +49 160 90666733



**Deputy for
East North**
Clemens Büttner
Landsberger Straße 257
D-12623 Berlin
Tel.: +49 152 33304757



**Deputy for
South**
Benjamin Eckert
Hofbräuallee 11
D-81829 München
Tel.: +49 160 97404145



**Deputy for
West/Switzerland**
Sandra Banholzer
Im Freihafen 14
D-47138 Duisburg
Tel.: +49 152 37419256

» Customer Service Hamburg



Teamleiterin
Katja Steffens
Beim Strohhouse 27
D-20097 Hamburg
Tel.: +49 40 391 855-090



Teamkoordinatorin
Claudia Penning
Beim Strohhouse 27
D-20097 Hamburg
Tel.: +49 40 391 855-091



Teamkoordinatorin
Uta Köll
Beim Strohhouse 27
D-20097 Hamburg
Tel.: +49 40 391 855-095



Teamkoordinator
Morten Tillack
Beim Strohhouse 27
D-20097 Hamburg
Tel.: +49 40 391 855-081



Teamkoordinator
Mike Henkel
Beim Strohhouse 27
D-20097 Hamburg
Tel.: +49 40 391 810-086

» Inside Sales Hamburg



Teamkoordinatorin
Mandy Neick
Beim Strohhouse 27
D-20097 Hamburg
Tel.: +49 40 391 855-120

We count on local presence. Your contact at TFG Transfracht. »

» Managing Director Maritime » Key Account Management Hamburg



Frank Erschkat
Rheinstraße 2
D-55116 Mainz
Tel.: +49 170 6383655



Head of Key Account Management
Paul Jakob Grützner
Beim Strohhouse 27
D-20097 Hamburg
Tel.: +49 160 4778576



Jens Mielke
Beim Strohhouse 27
D-20097 Hamburg
Tel.: +49 152 37543470



Sabine Maschler
Beim Strohhouse 27
D-20097 Hamburg
Tel.: +49 152 33111891



Hans Schulze
Beim Strohhouse 27
D-20097 Hamburg
Tel.: +49 152 37474378



Steffi Niemann
Beim Strohhouse 27
D-20097 Hamburg
Tel.: +49 152 37543470

» Head of Commercial



Philipp Best
Beim Strohhouse 27
D-20097 Hamburg
Tel.: +49 16090666733

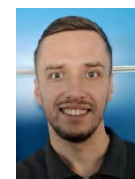
» Product Management



Head of Product Management
Magdalena Loboda-Ortiz
Beim Strohhouse 27
D-20097 Hamburg
Tel.: +49 151 16132789



Team Leader Pricing Management
Robert Redepenning
Beim Strohhouse 27
D-20097 Hamburg
Tel.: +49 160 97404154



Team Leader Product Management
Tim Diehl
Rheinstraße 2
D-55116 Mainz
Tel.: +49 152 37514596

Thank you very much for your interest! »



TFG Transfracht GmbH

Rheinstraße 2
D-55116 Mainz

Telephone: +49 (0) 49 391 855-120

www.transfracht.com
kontakt@transfracht.com

Photo source: TFG Transfracht, DB

April 2026

Directors:

Frank Erschkat (speaker), Thomas Hesse, Sören Kaminsky

The contents of this presentation are all the intellectual property of TFG. Any further use or distribution to third parties as an original, copy, electronic extract or duplicate content presentation requires the prior written agreement of TFG Transfracht GmbH.